

MARS USB Configuration Utility

Table of Contents

1. USB Software Installation

- 1.1. System requirements
- 1.2. Software installation

2. USB Software Operation

- 2.1. Starting the MARS USB Program
- 2.2. Reading the MARS configuration
- 2.3. Writing a configuration to the MARS
- 2.4. Writing the default configuration to the MARS

1. USB Software Installation

1.1. System requirements

- Windows 98, ME, 2000, XP.
- Pentium-based CPU.
- 32 MB RAM minimum.
- 2-button mouse.
- USB Port

1.2. Software installation

Windows 98/ME/2000/XP:

- Insert MARS USB Utility Installation CD into CD-DRIVE.
- Close all other window applications currently running on your system.
- Select "**Run**" from the "**Start**" menu and browse the CD for "**setup.exe**".
- Select "**OK**" and follow the instructions within the set-up procedure. Default installation directories are recommended.

NOTE: MARS USB Utility installation may include files that are older than those currently installed on your computer. It is recommended that the newer files be kept.

- It will be necessary to install a USB driver when the MARS is first connected to the PC via the USB cable. The driver can be found on the Installation CD in the 'USB Driver' directory.
- Connect a USB cable (provided) from the computer's USB port to the MARS USB port and proceed to the next step according to the operating system you have on your computer.

For Windows 98/ME:

Windows will recognize that new hardware is connected and the "Add New Hardware Wizard" will be displayed. See **Figure 1**, below:



Figure 1: Add New Hardware Wizard (1st screen)

Click “Next” to continue. A screen as shown in **Figure 2** will be displayed.



Figure 2: Add New Hardware Wizard (2nd screen)

Select “Search for the best driver for your device. (Recommended).”, then click “Next”. A screen as in **Figure 3** will be displayed.



Figure 3: Add New Hardware Wizard (3rd screen)

Ensure that “CD-ROM drive” is checked and/or “Specify a location” is checked. If specify a directory is checked, ensure that a location is specified in the drop down list (you may browse to the location of the “USB Driver” directory, if necessary). Click “Next”. A screen as in **Figure 4** will be displayed.



Figure 4: Add New Hardware Wizard (4th screen)

Click “Next” to continue. A screen as in **Figure 5** will be displayed.



Figure 5: Add New Hardware Wizard (5th screen)

Click “Finish” to complete the installation of the driver. You are now ready to use the USB Utility with the MARS. Proceed to Section **2. USB Software Operation**

For Windows 2000/XP:

Note: The Hardware Wizard screens in Windows 2000 and XP have only minor differences. However, the steps performed for the driver installation are the same. The following screens are taken from Windows XP.

If the MARS is not connected to the PC via the USB cable, connect it now. Windows will recognize that new hardware is connected and the “Welcome to the Found New Hardware Wizard” will be displayed (See **Figure 1**, below).

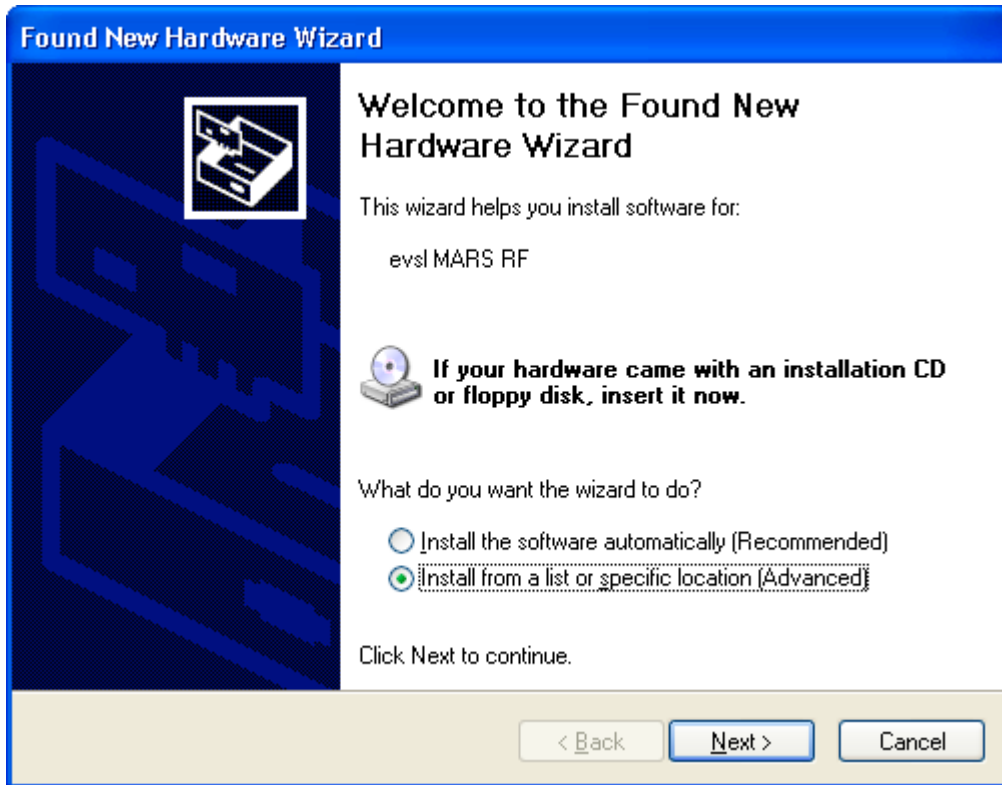


Figure 1: Found New Hardware Wizard (1st screen)

Select “Install from a list or specific location (Advanced)”. Click “Next”. The following screen will appear (See **figure 2**, below)

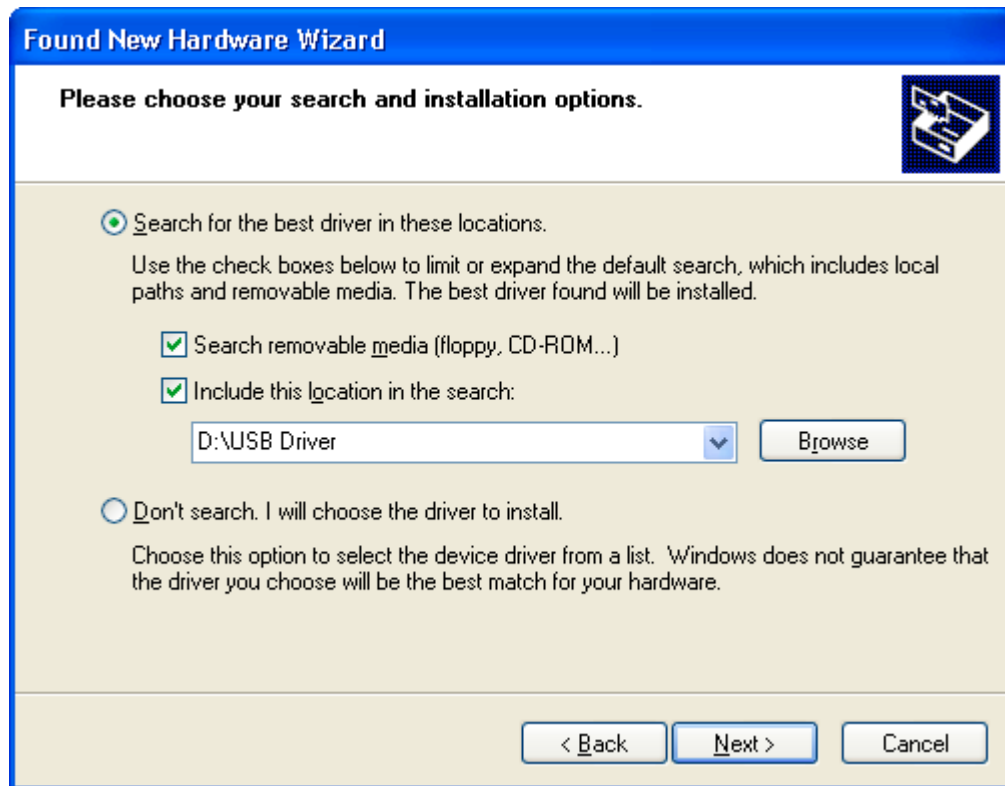


Figure 2: Found New Hardware Wizard (2nd screen)

Select “Search for the best driver in these locations.” Check both checkboxes and ensure that the location of the driver is specified in the drop down box (browse to the location of the driver, if necessary). Click “Next”. The following screen will appear (See **Figure 3, below**):



Figure 3: Hardware Installation Screen

To install the driver, click “Continue Anyway”¹. To stop the installation, click “Stop Installation”.

¹Note: EVSL has tested the software for use with Win 98/ME, 2000 and XP. The software has passed EVSL’s testing in these operating systems. This screen will only appear in Microsoft XP because Microsoft has chosen to display this message if a driver has not been submitted to Microsoft for testing.

If you selected “Continue Anyway”, the following screen will be displayed (See **Figure 4**)

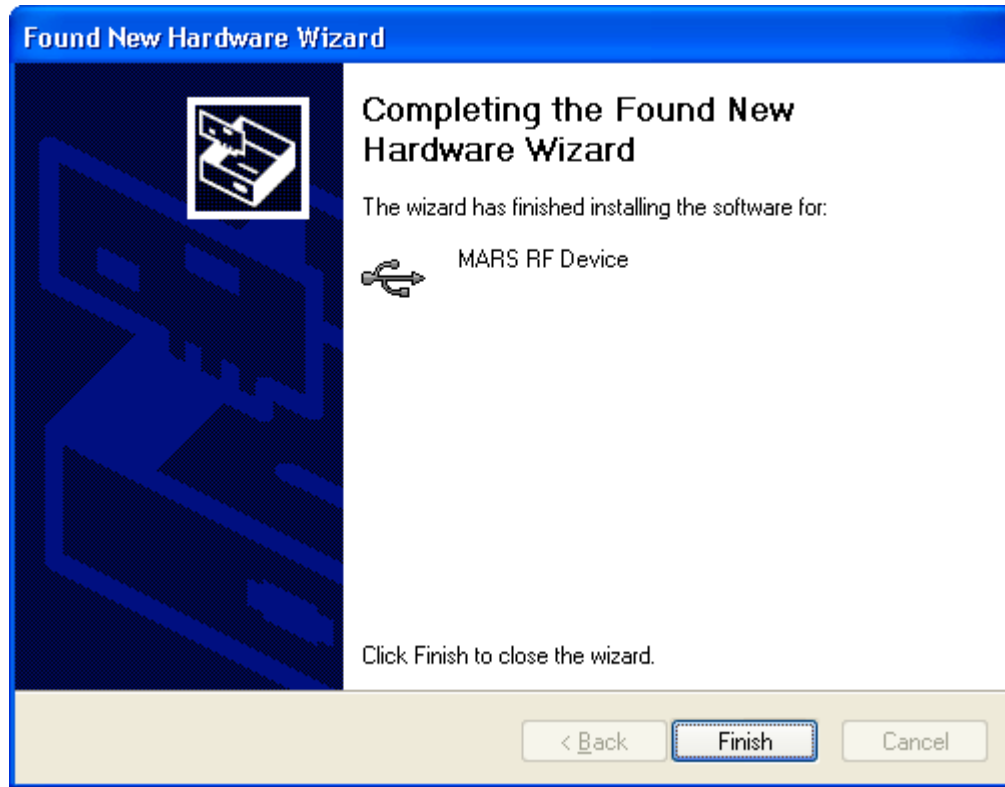


Figure 4: Completing the Found New Hardware Wizard.

Click “Finish” to complete the installation of the driver. Following this, you should see a message that says “Your new hardware is installed and ready to use.”

Proceed to Section **2. USB Software Operation.**

2. USB Software Operation

2.1. Starting the MARS USB Program

Start the MARS USB Utility program by selecting it from the Start Menu. The main screen will appear (see **Figure 1, below**)

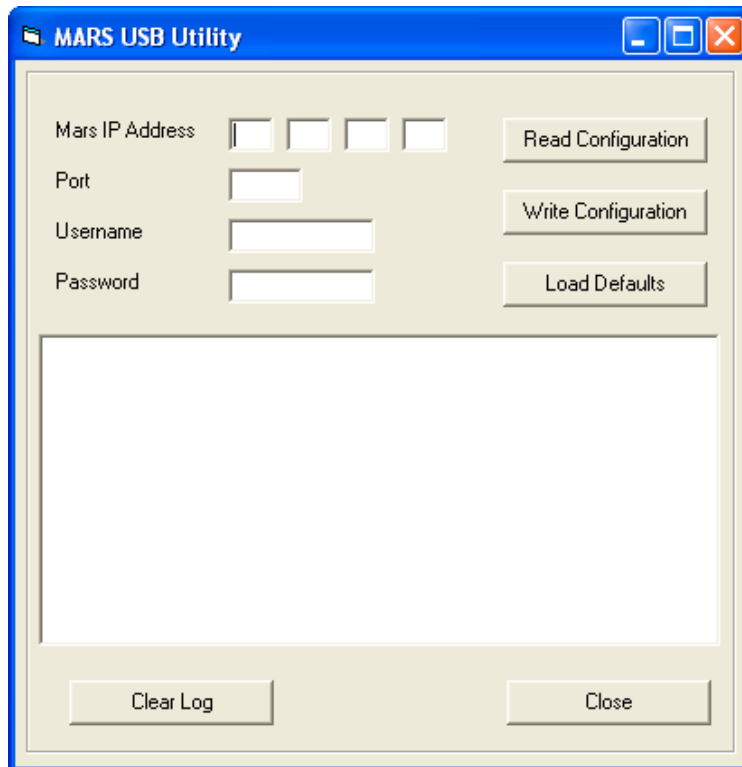


Figure 1: Mars USB Configuration Utility Screen

2.2. Reading the MARS configuration

To read the current configuration of the MARS unit, select 'Read Configuration'. If the operation is successful, the MARS configuration parameters will be displayed on the screen and the log window will confirm the success of the operation. If the configuration could not be read, the log window will indicate this.

2.3. Writing a configuration to the MARS

To write a configuration to the MARS, enter a configuration in the spaces provided and then select 'Write Configuration'. If the log window displays that the operation was successful, the MARS will have a new configuration. Otherwise, the log window will display a failure to write the configuration to the MARS.

2.4. Writing the default configuration to the MARS

To write the default configuration to the MARS, select 'Load Defaults'. A message will display the following: 'This will reset form to default values. Do you wish to continue?'. Select 'Yes' to load the default values on the form or 'No' to cancel. If you select 'Yes', the form will be populated with default values and the message "Do you wish to write the default configuration to the Mars" will be displayed. Select 'Yes' to write this configuration to the MARS or 'No' to cancel. The log window will display the success or failure of this operation.

At any time, the Log window can be cleared. To clear the Log window, select 'Clear Log'. To close the program, select 'Close'.